

MONTHLY MEMBERSHIP PROGRESS REPORT

District 24 I

Results as of: 6/30/2024

GMT:

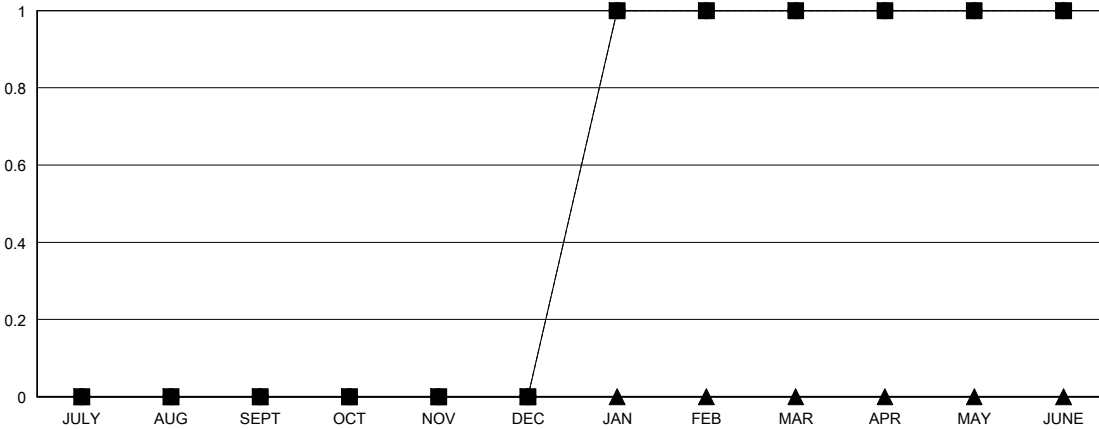
LOCATION VIRGINIA

GMT CA

| Clubs | | | |
|-----------------------|---------------|-----------|---------------|
| RESULTS FOR 2023-2024 | | | |
| QUARTER | NEW CLUB GOAL | NEW CLUBS | DROPPED CLUBS |
| JULY/AUG/SEPT | 0 | 0 | 1 |
| OCT/NOV/DEC | 0 | 0 | 1 |
| JAN/FEB/MAR | 1 | 1 | 0 |
| APR/MAY/JUNE | 0 | 0 | 2 |

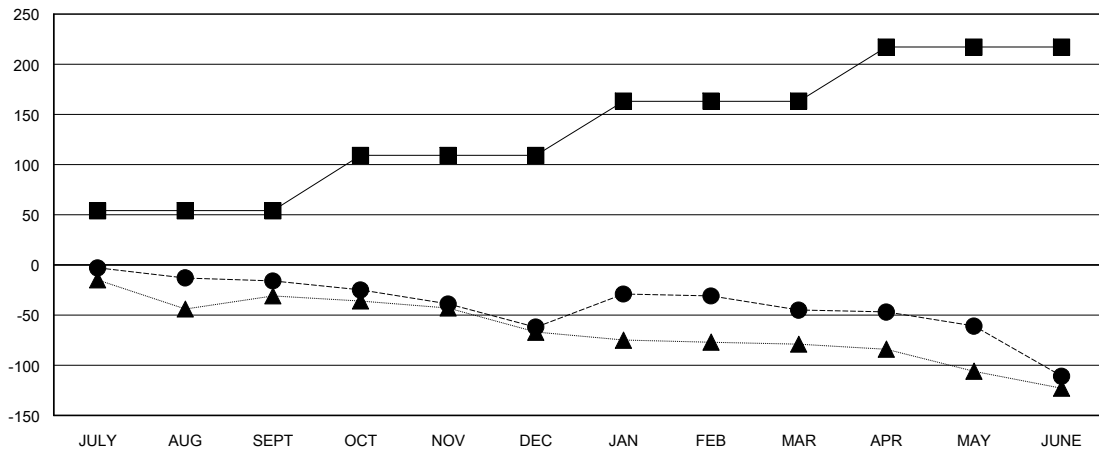
| Members | | | |
|-----------------------|------------------------|----------------------|--|
| RESULTS FOR 2023-2024 | | | |
| QUARTER | MEMBER GROWTH NET GOAL | MEMBER GROWTH ACTUAL | DROPPED MEMBERS ACTUAL (including transfers) |
| JULY/AUG/SEPT | 54 | 42 | 49 |
| OCT/NOV/DEC | 55 | 40 | 77 |
| JAN/FEB/MAR | 54 | 71 | 50 |
| APR/MAY/JUNE | 54 | 61 | 115 |

GOALS AND ACTUAL NEW CLUBS CUMULATIVE



- - CURRENT YEAR GOALS FOR NEW CLUBS
- - CURRENT YEAR ACTUAL NEW CLUBS
- ▲ - LAST YEAR ACTUAL NEW CLUBS

GOALS AND ACTUAL MEMBERS CUMULATIVE



- - MEMBER GROWTH NET GOAL
- - MEMBER GROWTH ACTUAL
- ▲ - LAST YEAR MEMBERSHIP ACTUAL

| | |
|------------------------|------------|
| DROPPED CLUBS: 4 | |
| DROPPED MEMBERS | |
| DECEASED | 43 |
| CLUB CANCELLED | 26 |
| OTHER | 222 |
| TOTAL | 291 |

51 CLUBS OF 86 ADDED 1 OR MORE NEW MEMBERS

| GENDER DISTRIBUTION | |
|---------------------|----------------|
| MALE | 1,042 (61.37%) |
| FEMALE | 656 (38.63%) |

[CLICK HERE FOR CUMULATIVE MEMBERSHIP DATA](#)

| | |
|---------------------------------|-----|
| TOTAL FAMILY UNIT MEMBERS | 265 |
| FAMILY MEMBERS PAYING HALF DUES | 135 |